

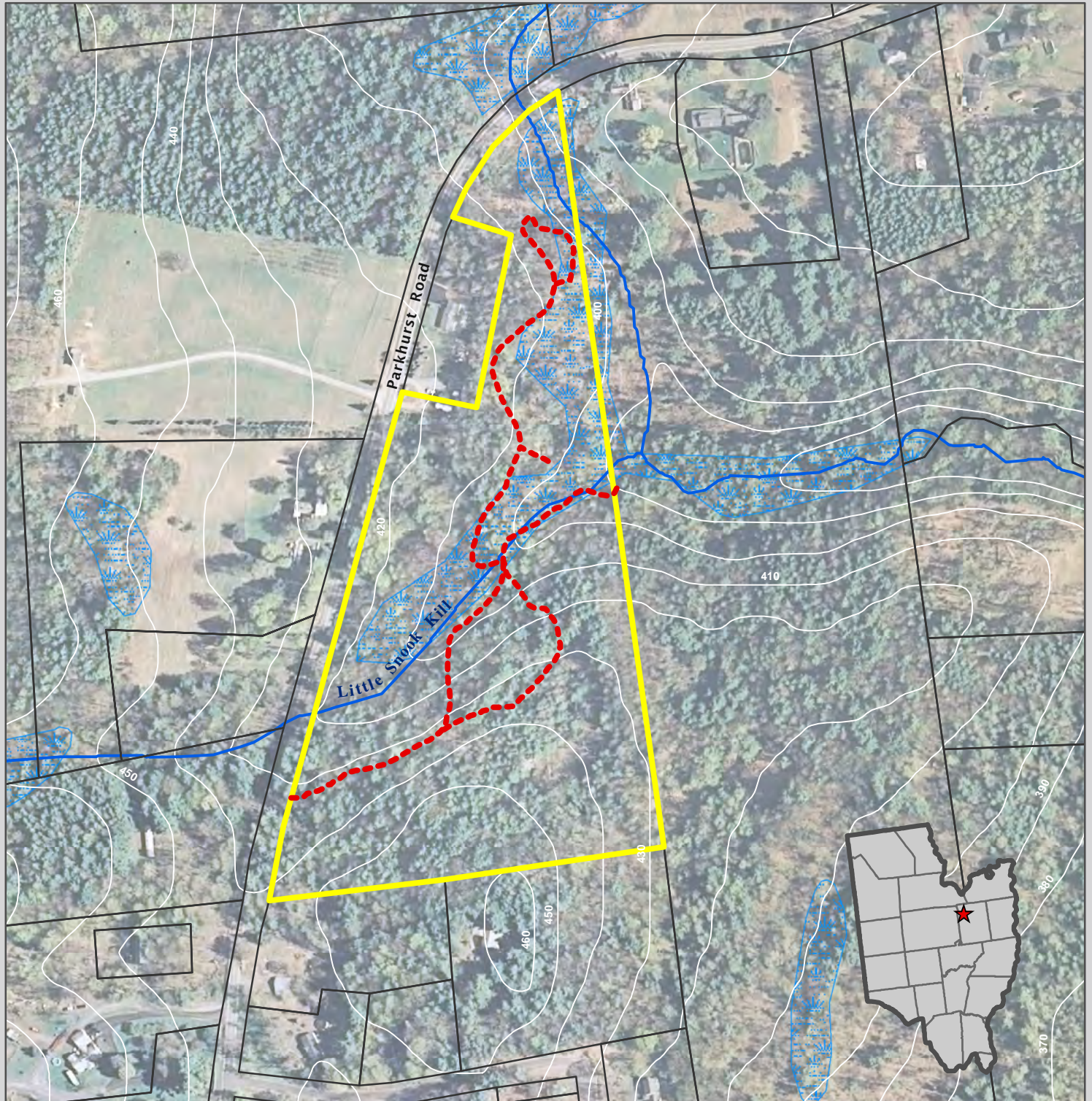


Orra Phelps Preserve

Tax Parcel #114.-1-10.11

Parkhurst Road

Town of Wilton



Map Legend

- Saratoga P.L.A.N. Easement
- Tax Parcel Boundaries
- Trail
- 10' Contour Line
- Stream
- Wetland



Data Sources:

2007 orthoimagery from New York Statewide Digital Orthoimagery Program
Tax parcel data from Saratoga County Real Property Tax Service Agency
Streams data from NYS Department of Environmental Conservation (NYSDEC)
Wetlands data from NYSDEC and U.S. Fish and Wildlife Service National Wetlands Inventory

1 inch = 300 feet

