

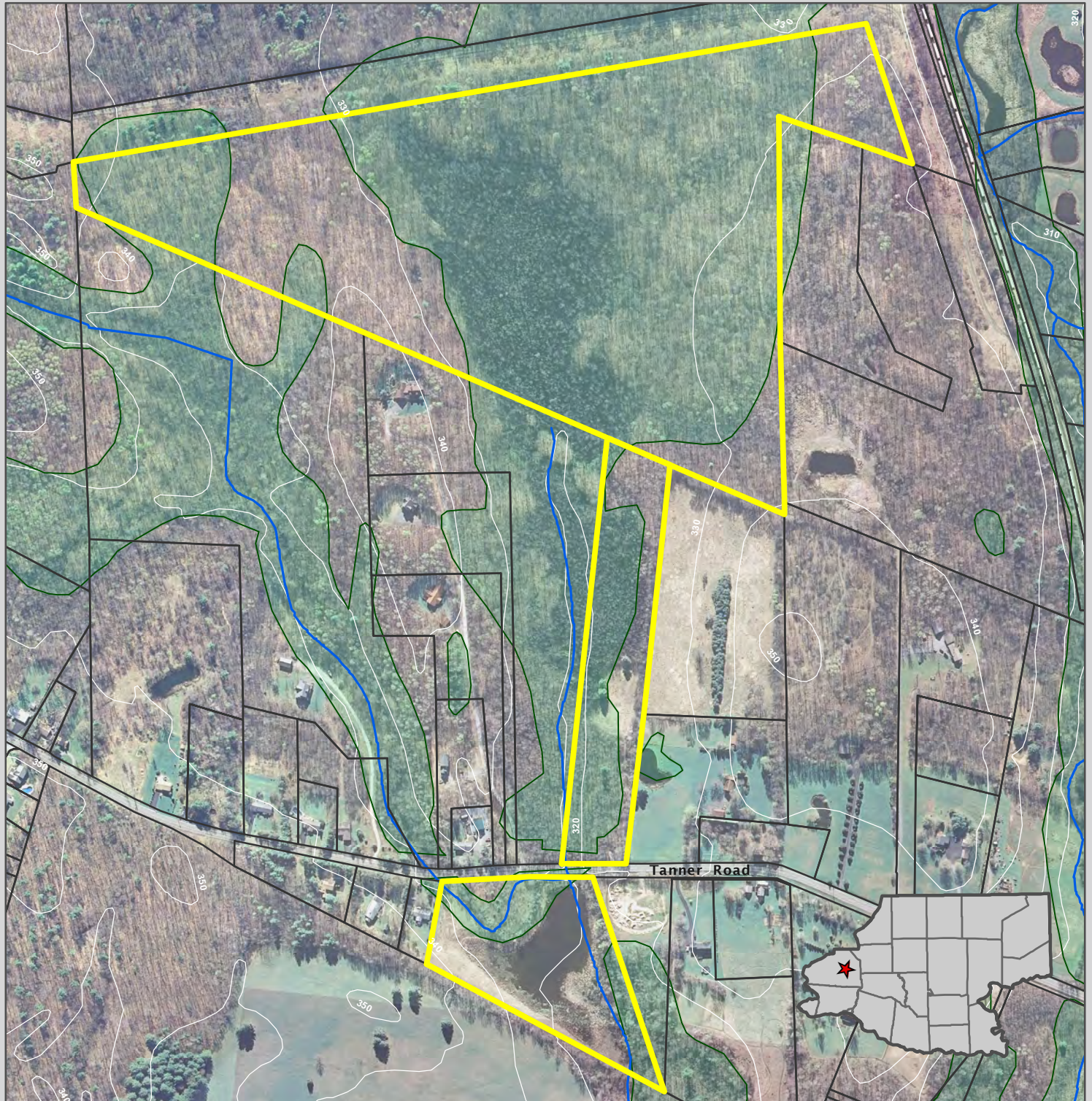


# Tanner Road Preserve

Tax Parcels #264.-3-68.11, #264.-3-75.2 and #264.-3-40.2

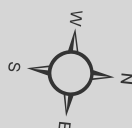
Tanner Road

Town of Clifton Park



## Map Legend

- Saratoga P.L.A.N. Easement
- Tax Parcel Boundaries
- 10' Contour Line
- Stream
- Wetland



## Data Sources:

2007 orthoimagery from New York Statewide Digital Orthoimagery Program  
Tax parcel data from Saratoga County Real Property Tax Service Agency  
Streams data from NYS Department of Environmental Conservation (NYSDEC)  
Wetlands data from NYSDEC and U.S. Fish and Wildlife Service National Wetlands Inventory

1 inch = 500 feet

