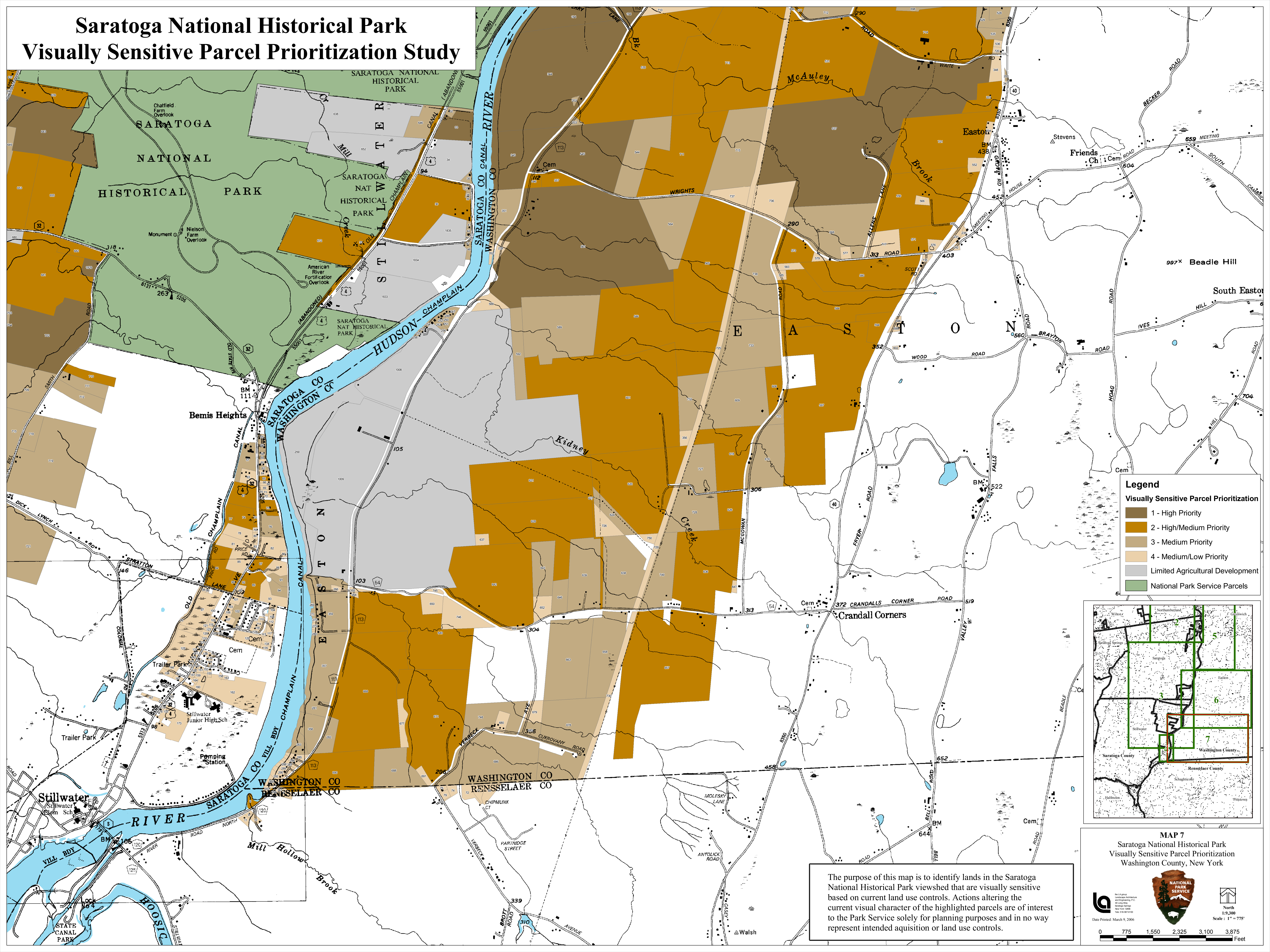
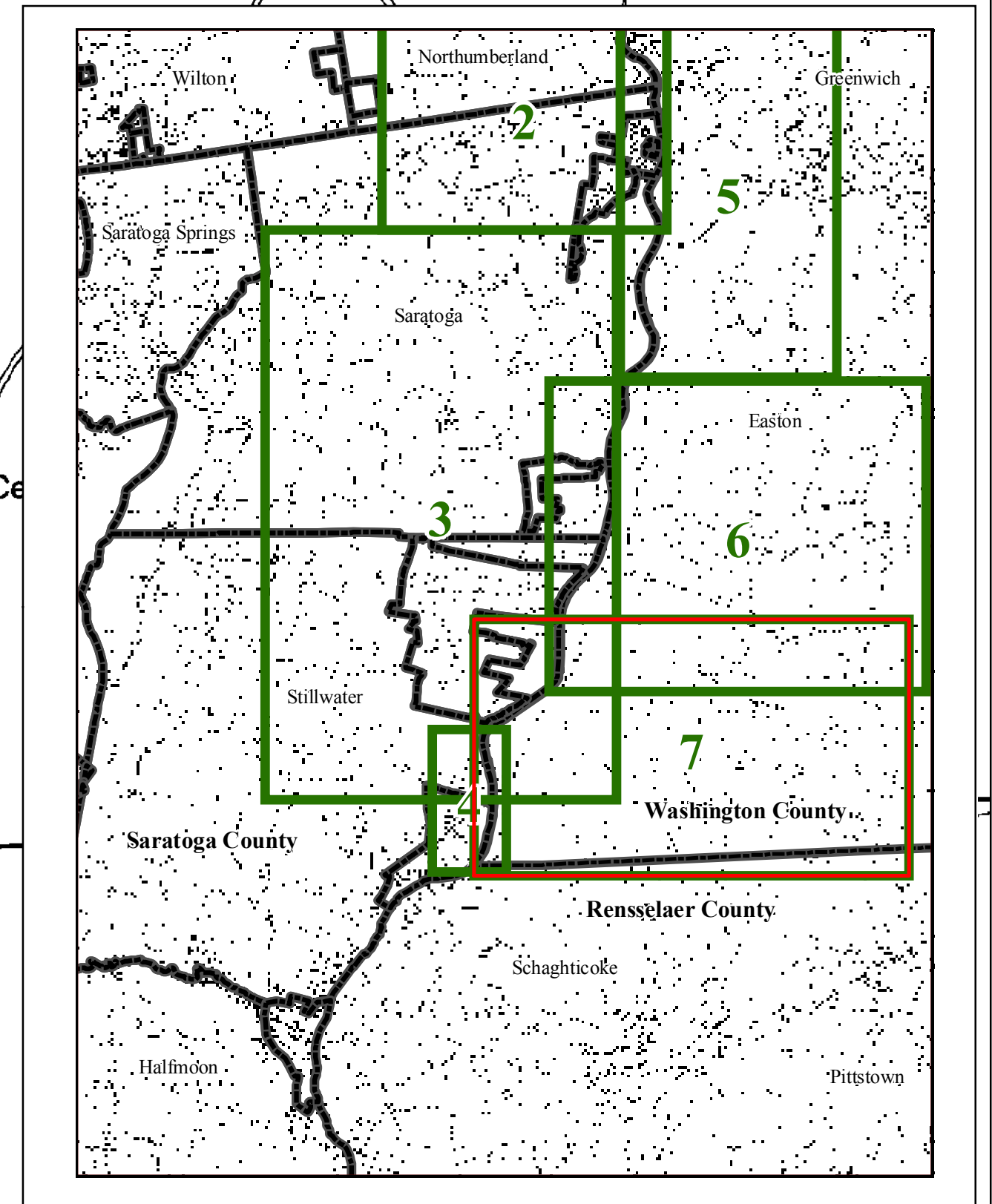


Saratoga National Historical Park Visually Sensitive Parcel Prioritization Study




Legend
Visually Sensitive Parcel Prioritization

- 1 - High Priority
- 2 - High/Medium Priority
- 3 - Medium Priority
- 4 - Medium/Low Priority
- Limited Agricultural Development
- National Park Service Parcels



The purpose of this map is to identify lands in the Saratoga National Historical Park viewshed that are visually sensitive based on current land use controls. Actions altering the current visual character of the highlighted parcels are of interest to the Park Service solely for planning purposes and in no way represent intended acquisition or land use controls.

MAP 7
Saratoga National Historical Park
Visually Sensitive Parcel Prioritization
Washington County, New York



North
1:9,300
Scale: 1" = 775'

Date Printed: March 9, 2006

